

National Canoe Time Trial series – Worcester
In conjunction with WORCESTER CANOE CLUB HASLER MARATHON RACE

This document provides the event information as it becomes available.

Document status:

Date	Changes	Who
9 th May 2015	Original draft	Nick Adnitt

Organiser: **Nick Adnitt** nickadnitt@aol.com mob: 07824327725

Hosts: **Worcester Canoe Club**

Contact: **Jon Cave** - joncave@msn.com

Date: **Sunday 17th May 2015**

Location:

**Worcester Canoe Club
Grandstand Road
Worcester
Worcestershire
WR1 3EJ**

Host web site: <http://www.worcestercanoecub.org.uk>

Timings:

- Registration opens – 08:30 hrs
- Last sign-on time – 09:30 hrs
- First boat starts – 10:00 hrs

Advanced entries by: Thursday 14th May 2015 to nickadnit@aol.com

Entry form available at:

http://www.darksidecanoes.com/documents/National_Time_Trial_Series_Entry_Form_V1_0.docx

Entry fee:

- Single seat - £6
- Double - £10

Registration: A registration desk will be located in the Worcester Canoe Club next to the Hasler registration.

Please complete an entry form (one per paddler), read the briefing instructions and sign-on. Collect a number board.



Parking

Parking by the canoe club on the Pitchcroft Racecourse. It can be accessed via Severn Terrace.



Course

The course is a ten mile loop between Diglis Lock (downstream) and Bevere Lock (upstream) incorporating one portage.

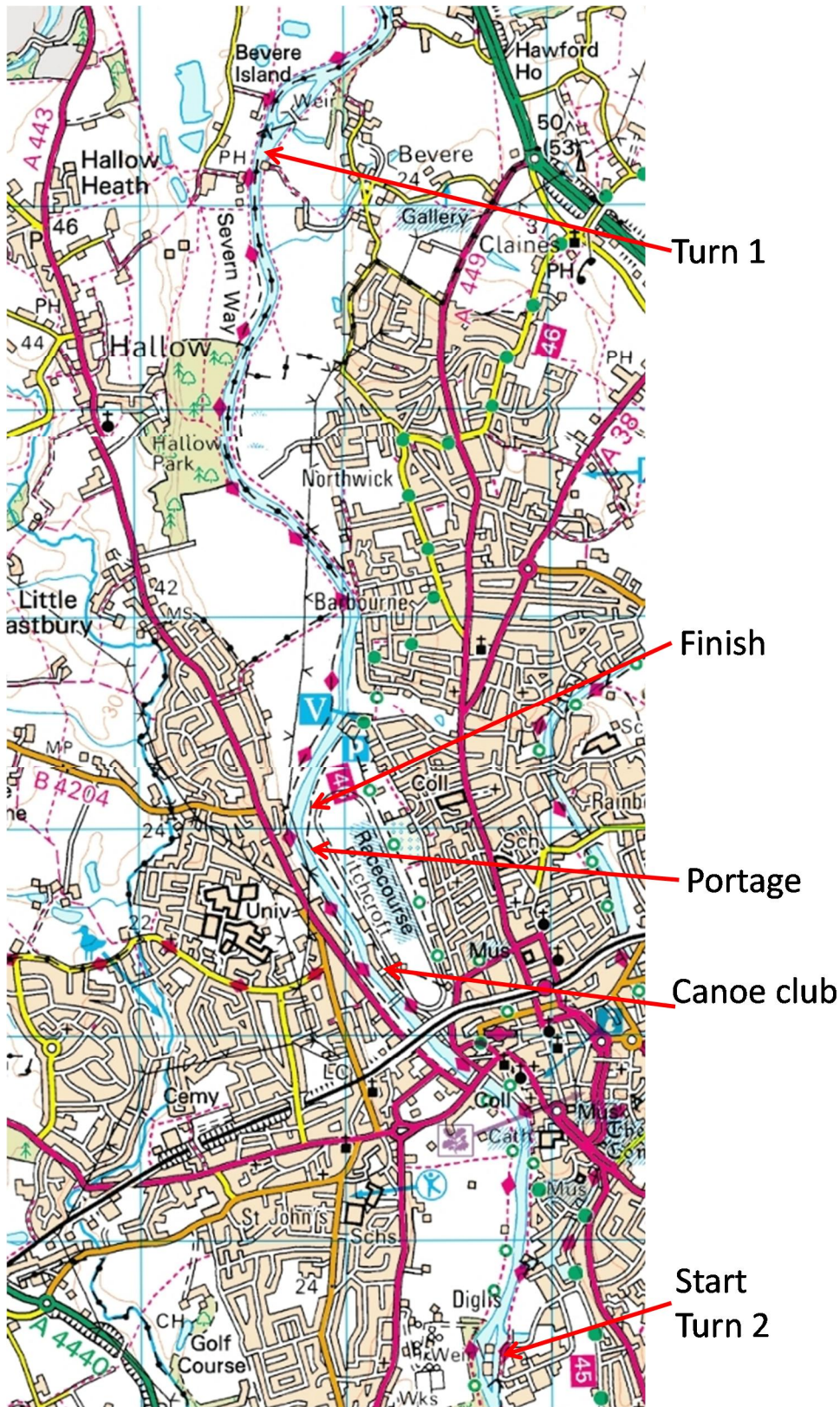
It is wholly the responsibility of the paddler to know the course. Any deviation from the course will result in no time being given. There will be maps, course diagrams, Marshalls, signs and flags to show the course.

The start is just upstream of Diglis Lock which is 1.5 miles downstream of the Worcester Canoe Club. Proceed upstream, past the canoe club to the portage on the right hand bank. This is a beach portage out and in.

Continue upstream to the turn at 4 miles, located at the landing stage next to the *The Camp House Inn* pub. Turn in an anticlockwise direction.

Continue downstream past the canoe club back to the turn at 8 miles located at the start just above Diglis Lock. Turn in an anticlockwise direction and continue back upstream.

Continue past the canoe club and the portage to the finish at 10 miles next to the northern turn of the race course.



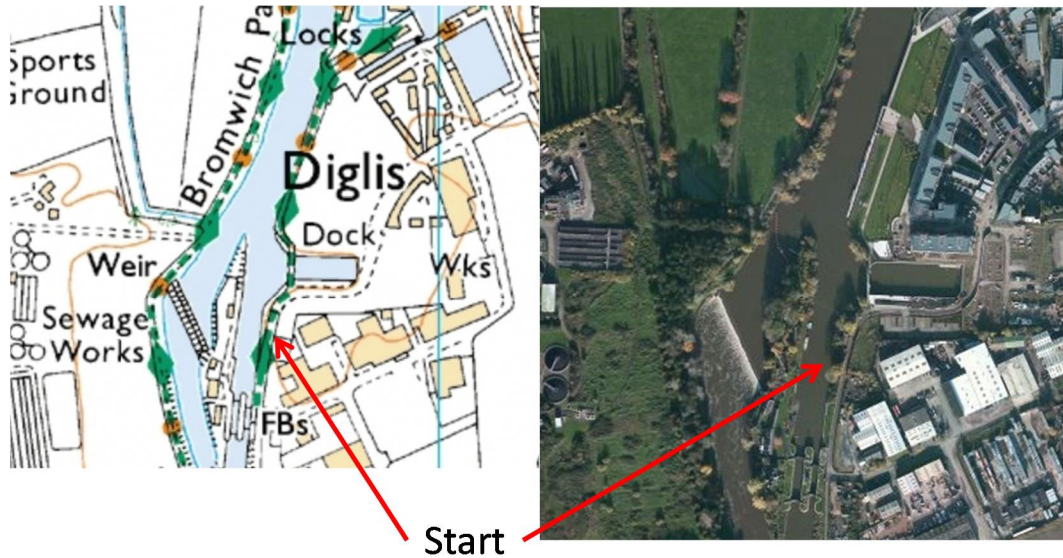
The start

The start is at the far end of a pontoon on the left bank of the river facing downstream. It is indicated by a union flag.

Ensure you leave enough time (about 15 minutes) to paddle from the canoe club to the start. Your start time is fixed.

Stay close to the left bank as you approach Diglis lock to avoid the weir stream.

You will be called forward by number, five minutes before your start time. With one minute to go, you will line up at the start, The stern of your boat will be held (if practical) and your start time will be counted down from 15, 10, 5,4,3,2,1 seconds., and then go.



Start pontoon (facing upstream)



Start pontoon and turn 2 (facing downstream)

The first turn

The first turn is four miles after the start. It is in line with the upstream end of the landing stage for the *The Camp House Inn* pub. It will be indicated with a buoy.



Turn 1



Turn 1 looking upstream (landing stage on left bank)



Turn 1 looking downstream (landing stage on right bank)



Turn 1

The second turn

The second turn is at the same place as the start. Avoid the right hand channel to the weir. Turn anticlockwise in the left channel in line with the end of the pontoon. There will be no marker buoy.

The portage

The time trial will use the same portage as the Hasler event. It is a beach get-out, a short, flat run, and then a beach put-in. The portage is only traversed once during the race on the first upstream section.



Portage get-out approach



Portage



Portage put-in



Portage put-in

The finish

The finish is on the right bank going upstream, just past the end of the portage. It is indicated by a chequered flag.

Results

The results will be available at the canoe club when the last boat has finished. They will also be published on the web site.

← end →